

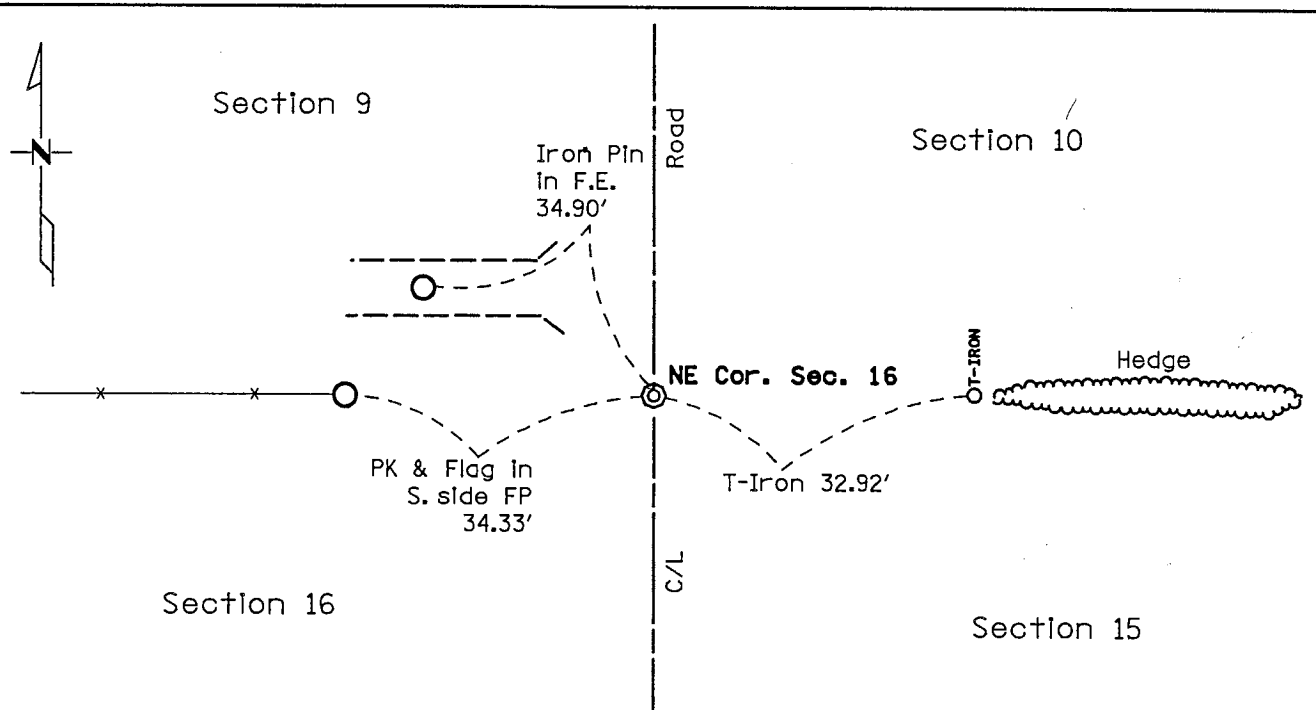
*James V. Johnson*

# CERTIFICATE OF LOCATION OF GOVERNMENT CORNER

NORTHEAST Corner of Section 16, Township 107, Range 41  
5th Principal Meridian, State of Minnesota, County of MURRAY

At the corner location shown on the sketch:

- On JULY 27, 2009 found an Minnesota Department of Transportation cast Iron  
DATE  
monument.
- left monument as found     lowered monument     removed monument (explain)
- On \_\_\_\_\_ placed a \_\_\_\_\_  
DATE



Statement of evidence for this corner location is on back of this page.

I hereby certify that this document was researched and prepared by me or under my direct supervision.

Signature *Matthew J. Schlager* Date 4-26-2010 License No. 24640  
Title:  Land Surveyor     Professional Engineer     County Surveyor     County Engineer

## Certificate of Location of Government Corner

Northeast Corner, Section 16, Township 107 North, Range 41 West

July 2009

A Mn/DOT survey crew, (crew chief Jeff Balbach) found the Minnesota Department of Transportation Cast Iron Monument set by Duane Bonnema in 1989. The chain ties were updated.

For a more complete history of this corner, refer to the Certificate of Location of Government Corner Document filed with the Murray County Recorder on March 1, 1989.